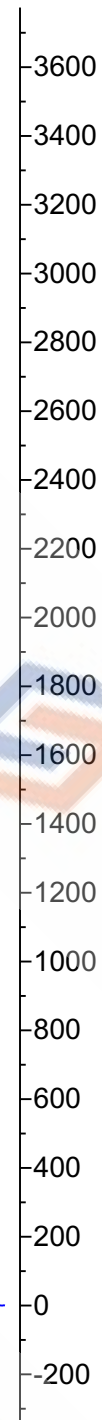


400 MHz, CDCl₃



1.654

0.000



10

9

8

7

6

f1 (ppm)

5

4

3

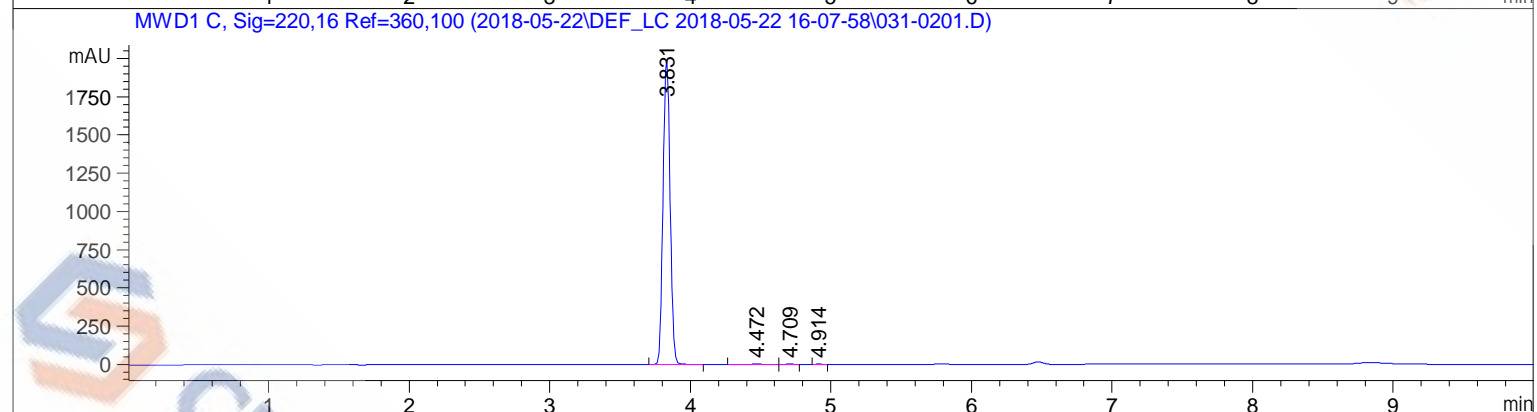
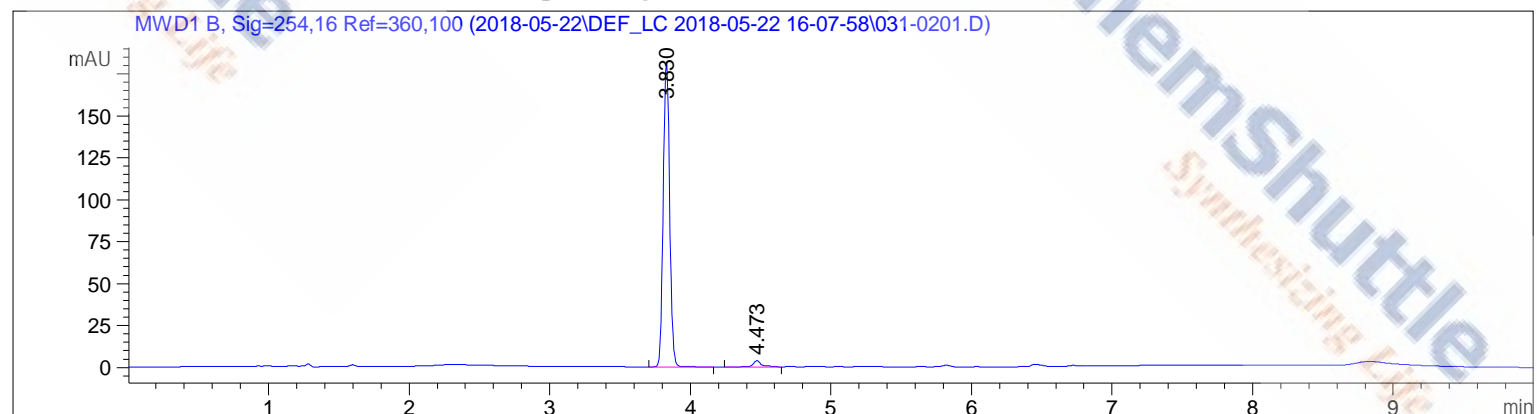
2

1

0

=====

Acq. Operator	: 131-199-048-SPC03-1031-1-2	Seq. Line	: 2
Acq. Instrument	: Instrument 1	Location	: Vial 31
Injection Date	: 5/22/2018 4:20:43 PM	Inj	: 1
		Inj Volume	: 1.0 µl
Acq. Method	: C:\CHEM32\1\DATA\2018-05-22\DEF_LC 2018-05-22 16-07-58\CHEM_1.M		
Last changed	: 5/18/2018 1:06:04 PM by 131-199-048-SPC03-1031-1-2		
Analysis Method	: C:\CHEM32\1\METHODS\CHEM_1.M		
Last changed	: 5/18/2018 1:06:04 PM by 131-199-048-SPC03-1031-1-2		
Additional Info	: Peak(s) manually integrated		



=====
Area Percent Report
=====

Sorted By : Signal
Multiplier: : 1.0000
Dilution: : 1.0000
Use Multiplier & Dilution Factor with ISTDs

Signal 1: MWD1 B, Sig=254,16 Ref=360,100

Peak #	RetTime [min]	Type	Width [min]	Area [mAU*s]	Height [mAU]	Area %
1	3.830	BB	0.0492	578.97302	181.78600	97.2011
2	4.473	BV	0.0665	16.67132	3.70526	2.7989

Totals : 595.64434 185.49125

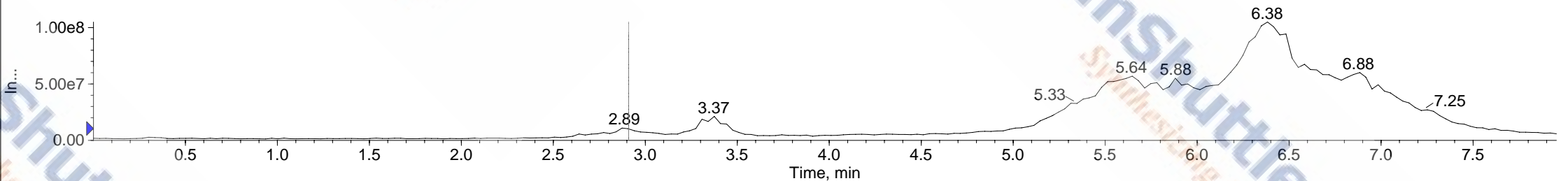
Signal 2: MWD1 C, Sig=220,16 Ref=360,100

Peak #	RetTime [min]	Type	Width [min]	Area [mAU*s]	Height [mAU]	Area %
1	3.831	BV	0.0550	7009.42334	1993.30420	99.4923
2	4.472	BV	0.0624	20.70636	4.98736	0.2939
3	4.709	VB	0.0506	9.68762	2.92637	0.1375
4	4.914	VB	0.0483	5.37754	1.73016	0.0763

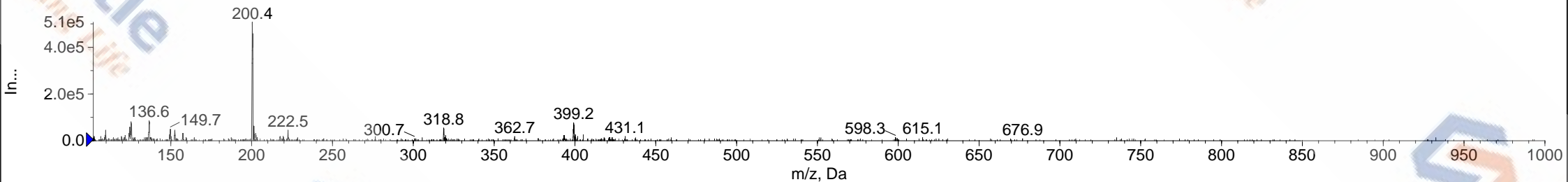
Totals : 7045.19486 2002.94808

=====
*** End of Report ***

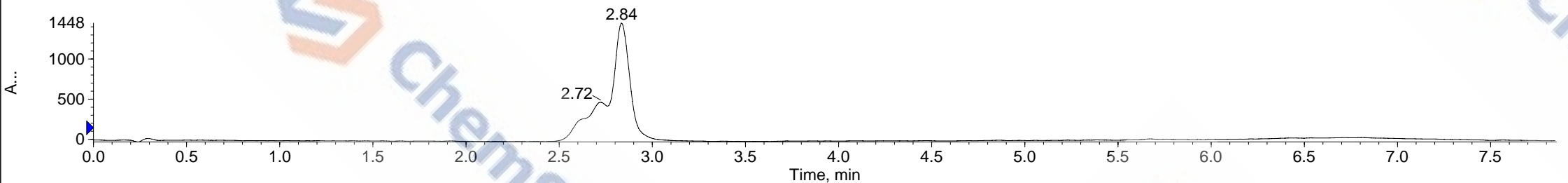
■ TIC of +Q1: from Sample 17 (130-218-046-CAT3442) of 20180523.wiff (Turbo Spray) Max. 1.0e8 cps.



■ +Q1: 2.907 min from Sample 17 (130-218-046-CAT3442) of 20180523.wiff (Turbo Spray) Max. 5.1e5 cps.



■ XWC of DAD Spectral Data: 220.0 nm from Sample 17 (130-218-046-CAT3442) of 20180523.wiff Max. 1447.8 mAU.



■ XWC of DAD Spectral Data: 254.0 nm from Sample 17 (130-218-046-CAT3442) of 20180523.wiff Max. 49.8 mAU.

